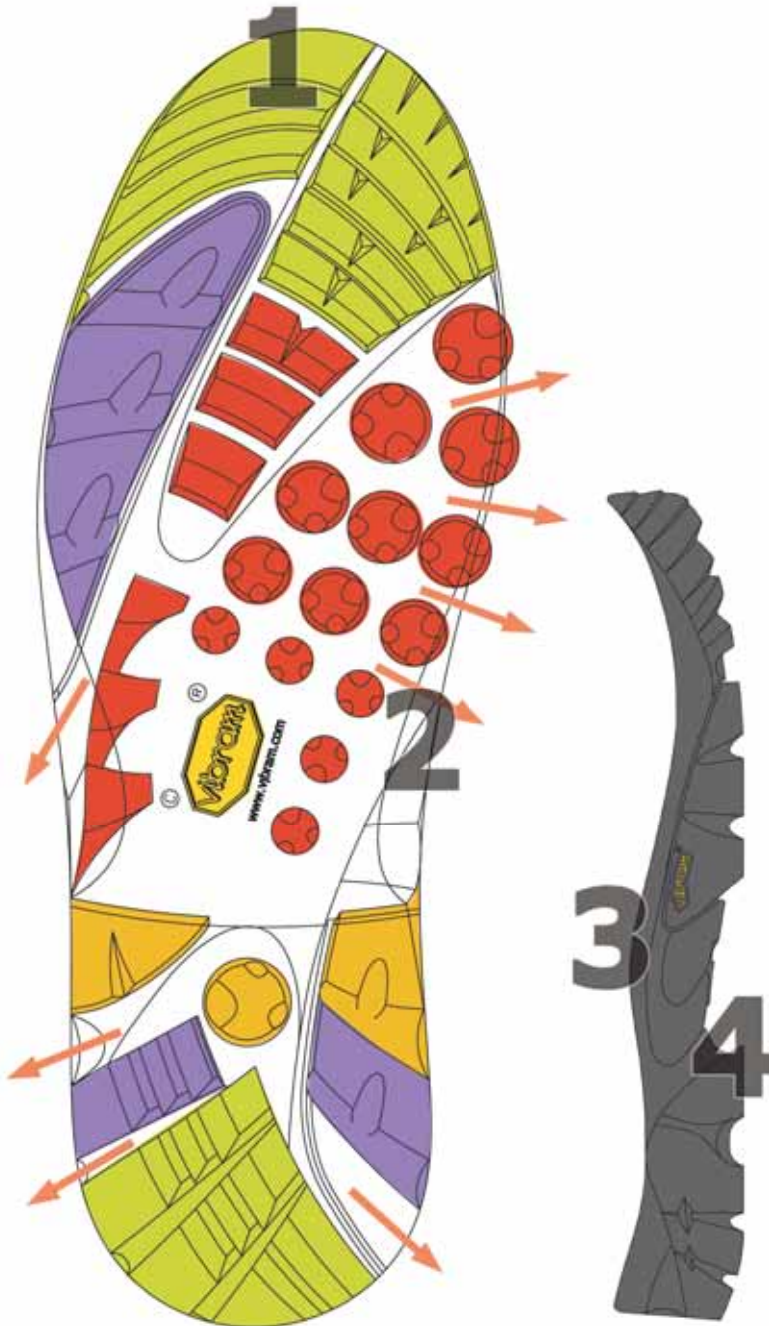


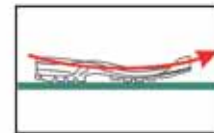
# Hiking Man



- 1** Large contact toe for GRIP ON ROCKY SURFACE
- 2** Engraved shank for better GRIP ON UNEVEN GROUND
- 3** High profile cupsole for PROTECTION
- 4** Undercut heel for SECURE BRAKING



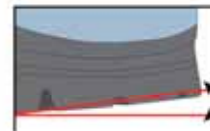
Vibram® Multitraction Lug TRACTION



Rockered profile for EASY TOE-OFF



Toe-bumper for foot PROTECTION AND GRIP



Asymmetrical heel for NATURAL TOUCH-DOWN

-  GRIP
-  TRACTION
-  BRAKING
-  CUSHIONING
-  STABILITY
-  SELF-CLEANING



Product innovation and design provided by Vibram® are protected by patent and copyright law for the brands we serve and their wholesale manufacturers. Vibram® protects original designs from counterfeiting and imitations.

[www.vibram.com](http://www.vibram.com)

